

DRAGHEADS

One of the key drivers for to maximize dredging efficiency of a Trailing suction Hopper dredger (TSHD) is minimum dredging cycle time and hopper loading time. Hopper loading time is strongly determined by the performance of the underwater excavating mechanism; the draghead.

By combining sufficient surface contact pressure with riverbed or ocean floor, adequate cutting force and injection of jetwater, the draghead is the ultimate tool to liquefy densely compacted soils on riverbeds and ocean floor.

Under ideal dredging conditions, minimum loading and dredging cycle time can be achieved by excavating and transporting soil at a maximum and constant slurry density into the hopper.



As dredging and soil conditions often vary throughout a dredging job, the dredge operator requires that the draghead can be adjusted to cope with these variations, still enabling maximum performance.

HollandMT offers the following range draghead types, sizes and services:

- ✓ Wide range of standard dragheads, Universal and California type
- ✓ Suitable for suction pipe diameter of 450-1300 mm
- ✓ Custom designed dragheads, in accordance with customer's requirements
- ✓ Fabrication of dragheads, in accordance with customer's design
- ✓ Draghead evaluation and upgrade program

Standard features of HollandMT dragheads are:

- ✓ Efficient hydraulic design
- ✓ Adjustable visor (gravity)
- ✓ Adjustable water inlets
- ✓ Replaceable teeth system
- ✓ Replaceable wear blocks and side skirts
- ✓ Wear resistant side skirts
- ✓ Grid to prevent blockage with boulders
- ✓ Rubber fenders to protect ship's hull and gantries
- ✓ Sturdy lip seal for sealing visor

Holland Dredge Parts BV is a business unit of Holland Marine technologies BV

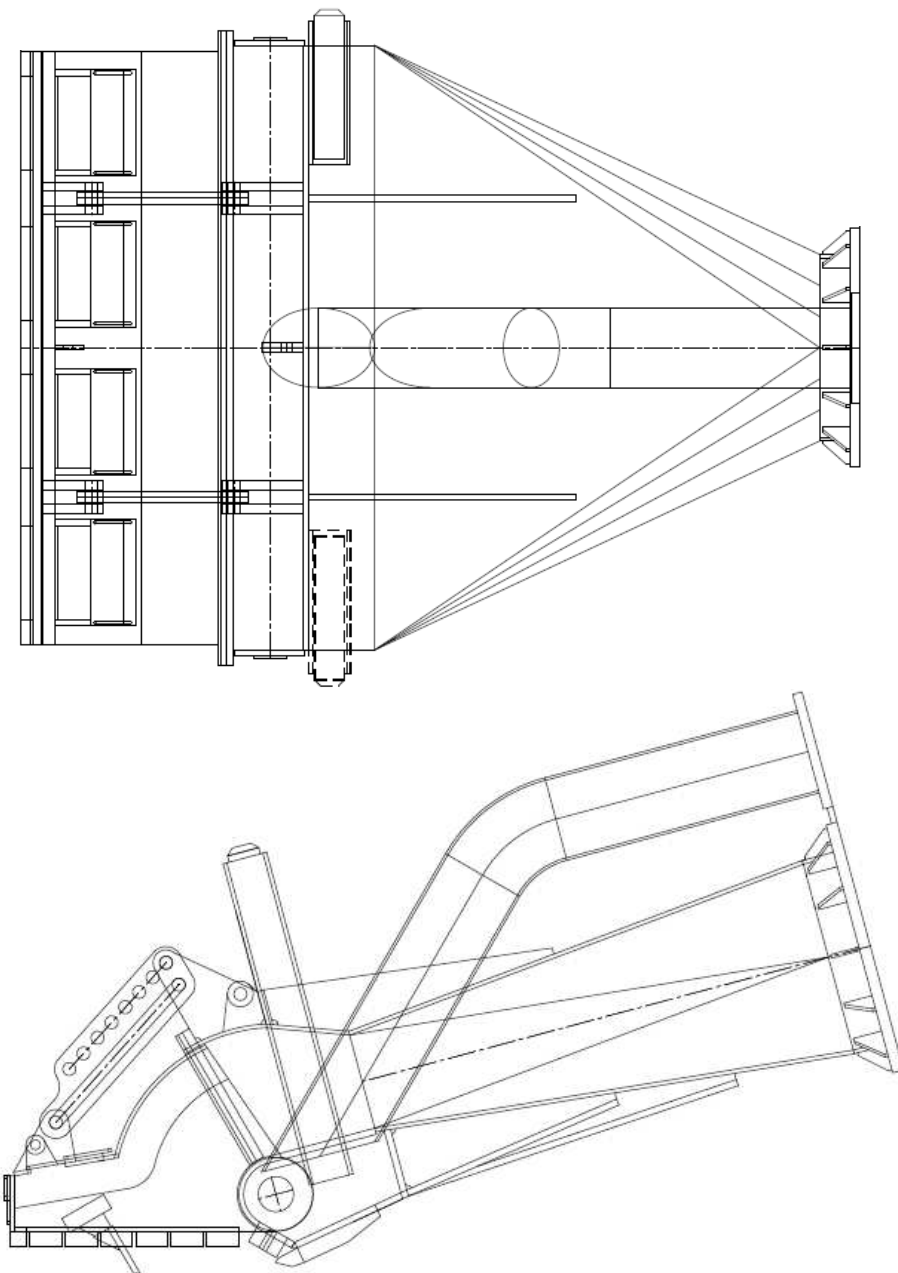
Tel +31(0)348 416075
Fax +31(0)348 410019

E-mail Info@HollandMT.com
Web www.HollandMT.com

Rabobank 1468.65.642
SWIFT/BIC code RABONL2U
IBAN code NL15RABO 0146 8656 42
Vat (BTW) 8202.78.750. B01

Optionally HollandMT can incorporate the following:

- ✓ Various jet water configurations, including jetwater on teeth-bar.
- ✓ Special wear resistant coated jetnozzles
- ✓ Adjustable visor with hydraulic actuators and position indicators
- ✓ Hydraulically adjustable water inlets
- ✓ Shear bolts or breaking pins to avoid excessive trailing forces
- ✓ Pressure/vacuum sensors
- ✓ Control philosophy for draghead, visor angles, adjustment of water inlets, jetwater pressure/flow and swell compensator settings



HollandMT drag heads are manufactured by first class partner fabricators in China, all welds are inspected X-rayed and stress relieved if required.

Holland Dredge Parts BV is a business unit of Holland Marine technologies BV

Tel +31(0)348 416075
Fax +31(0)348 410019

E-mail Info@HollandMT.com
Web www.HollandMT.com

Rabobank 1468.65.642
SWIFT/BIC code RABONL2U
IBAN code NL15RABO 0146 8656 42
Vat (BTW) 8202.78.750. B01