

DREDGE-X300

BACKHOE PONTOON DREDGER
W/LIEBHERR P9250



GENERAL

The FKAB/HollandMT Dredge-X300 design is a Backhoe Pontoon Dredger accommodating a Liebherr P9250. The Dredge-X300 is fitted with 2 fixed spuds and one "walking" forward spud. All spuds can be tilted by cylinders, with wires still attached, and can be fastened horizontal on deck for (sea-) towage. The hull is heavy welded construction with a double hull, bottom and sides.

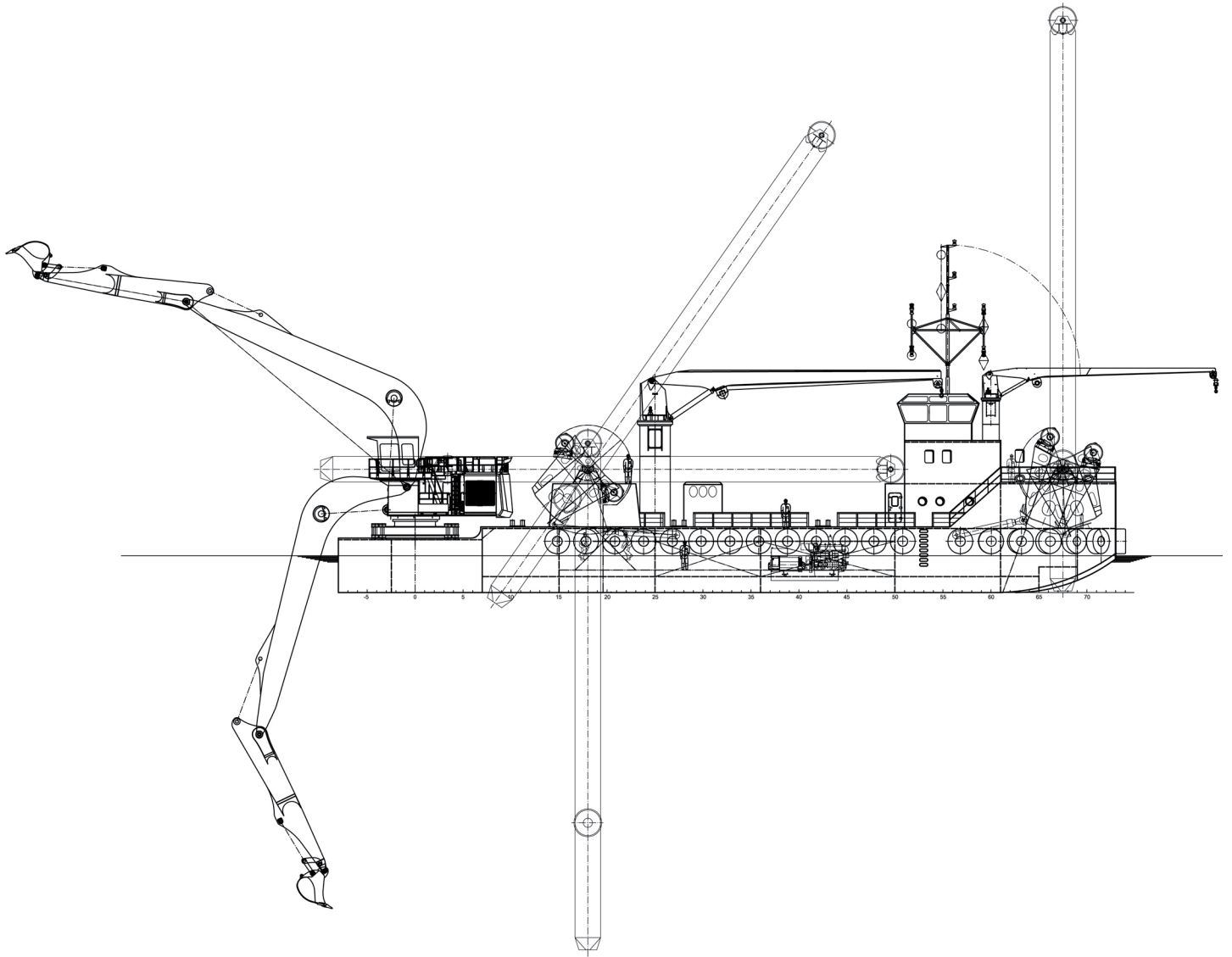
The hydraulics of the excavator is driven by electric motors located in the excavator. Electric power is generated by diesel generators, located in a dedicated engine room in the pontoon and are cooled through box coolers. Hydraulic power for spud operations (hoisting, lowering, tilting, moving) is generated by a hydraulic powerpack located in the engineroom.

Different boom, stick and bucket arrangements are available but also different excavating attachments like grabs, rippers, etc.

Accommodation is located on the frontside of the vessel, suitable for 9 persons.

MAIN FIGURES

Dredging depth	22.0 m
Excavator	Liebherr P9250



MAIN PARTICULARS

Length over all	48.6 m	Excavator	Liebherr P9250
Breadth mld	16.0 m	Generator power	1 600 kW
Depth mld	3.3/4.0 m	Harbour/emergency generator power	90 kW
Draught	2.3 m	Accommodation	9 persons
Dredging depth	22.0 m		

OPTIONAL

- Propulsion for positioning
- Extra accommodation
- Service crane
- Other Booms & Sticks arrangements
- Various backhoe attachments